



Eco Structures *LINK TENTS*

WANT TO KNOW MORE?

ecostructures.com.au

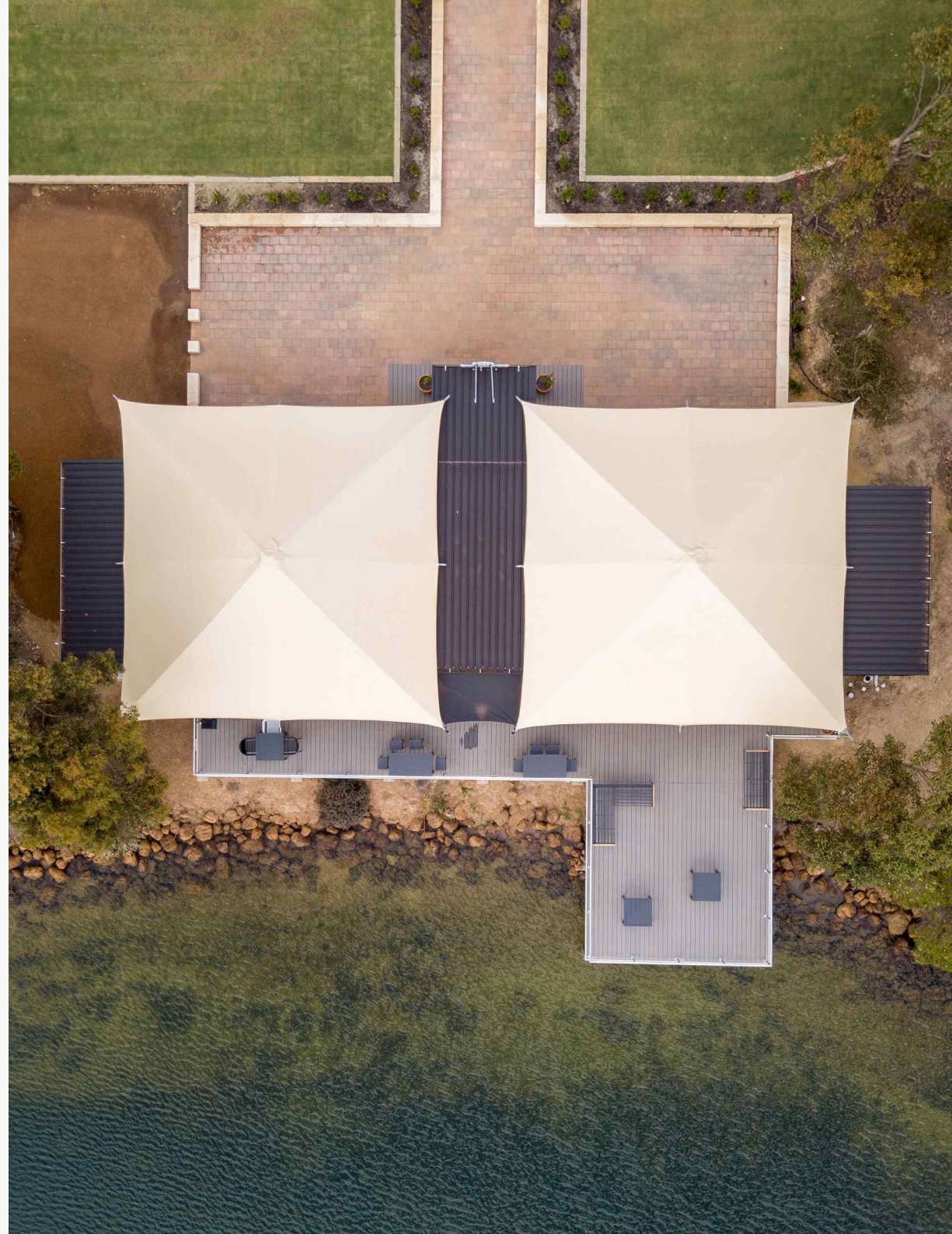
  @EcoStructures

24 Marine Terrace,
Fremantle,
Western Australia, 6160
+61 8 9193 8007

Customisable *ECO SOLUTIONS*

Our architecturally designed, modular system allows for total customisation with add on options. Starting with our base model 6.3m link (6.3m x 18.75m) additions can be included to create your own floor plan.

This example on the right shows how our standard 6.3m link tent was customised with additional bathroom pods, enclosures and decking modules to create a cellar door with the extended front deck protruding over a water front area.







ECO STRUCTURES
LUXURY EXPERIENTIAL ACCOMMODATION

6.3m x 18.8m - *LINK TENT*

Starting from \$119,400

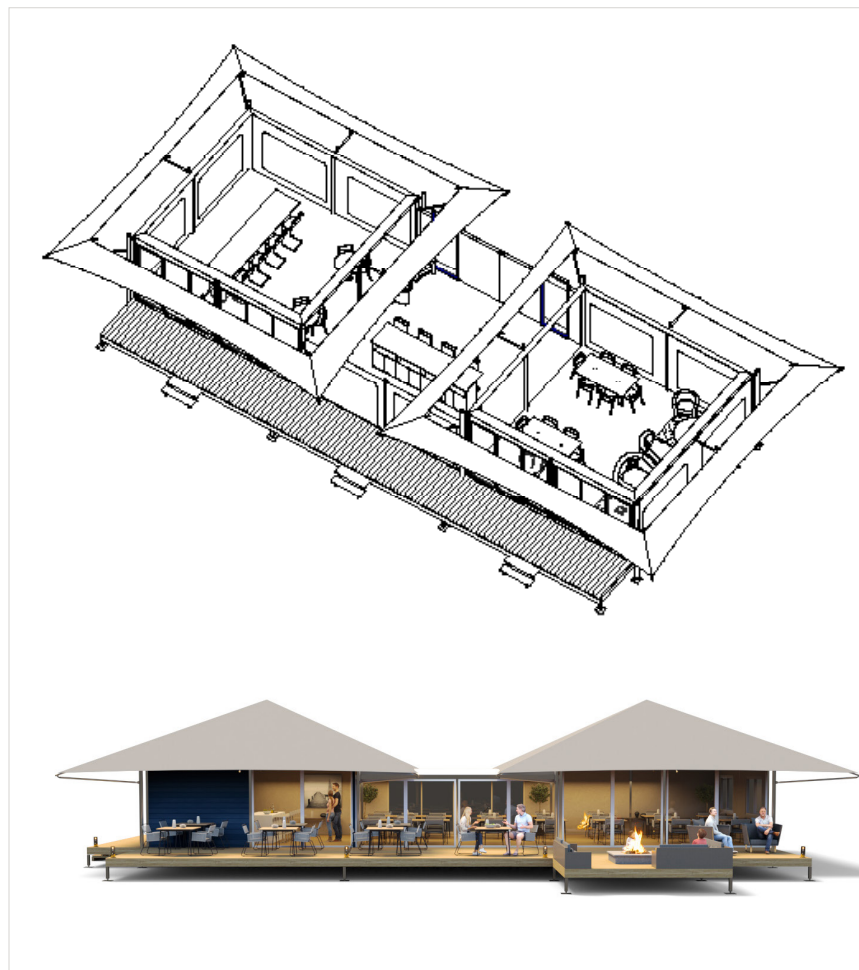
*3D's are presented are for illustrative purposes only.
All prices are in AUD and exclude GST.*

Our standard 6.3m link facility structure offers 118m² of internal floor space which can be utilised for a variety of different purposes.

The standard tent has the following inclusions:

- Canvas walls and ceilings
- PVC roofing
- Cerment flooring internals
- PVC Eco Decking external
- Colourbond tin roofing on link unit.

The standard tent can be customised to suit your own specific requirements by including a range of upgrades, offering further flexibility in the floor plan layout and overall design.





ECO STRUCTURES
LUXURY EXPERIENTIAL ACCOMMODATION

Customisable *ADD-ONS*

Our standardised link tent is perfect for a simple and efficient way of providing a facility space. The standard link tent can then be upgraded with extra decking, internal walls, glass windows & doors. These upgrades can allow the space to feel more luxurious. Your sales advisor can discuss the various upgrades available allowing you to create the perfect floor plan.

DECKING

Decking can be added on to a facility building to give more external space. The standard deck is 1.8m, however there are options of deck sizes 2.7m or 5.4m.

EXTERNAL FINISHING OPTIONS

The standard exterior finish of the facility building is canvas. This can then be upgraded to a panelised hard wall system (please see page for details), glass windows & doors or a Colourbond finish.

INTERNAL WALLS

Internal canvas walls can be added to create separate rooms and spaces - pricing is based upon sqm required. If the external walls are upgraded from canvas to our panelised hard wall system then hard walls may be introduced inside the tent - POA.

GLASS DOORS & WINDOWS

There are a variety of glass options for the facility buildings. These include glass sliding doors which can create an indoor/outdoor space. Glass windows are also an option when the panelised hard wall system is utilised.

CEILING OPTIONS

Canvas is the standard option for facility ceilings. This can then be upgraded to a solid ceiling option which provides higher thermal efficiency and sound proofing.

PVC STRETCH

Our traditional 4-Hip Roof PVC can be upgraded to a stretch PVC roof instead.

Typical Eco Structures *PROCESS*

You are **HERE**

1	Identify full project scope		-	Business vision, architecture & design, rooms & facilities, pricing, brief formation.
2	Formal quote developed & supplied		1-2 month/s <i>Variable due to clients variations</i>	Select one of our tent options and go through sketch design and development with our team
3	Project Specifications Signed		-	Drawings can only begin after the deposit has been paid 10% deposit
4	Drawing Process		1 week <i>Variable due to clients variations</i>	Formal Architectural drawings supplied with all requirements for the project including final colour selections & specifications
5	Manufacturing Drawings		1-2 month	Once we have received deposit we will proceed with engineering & manufacturing drawings
6	Manufacturing		6-8 weeks	Our Freight & Logistics team will keep you updated with emails and phone calls
7	Shipment		4 weeks	Computerized tracking systems and any paperwork you need for the duties & Taxes.
8	Delivery to site		Variable	Remote areas may require longer delivery times due to limited accessibility.
9	Installation		4 days+ (per unit) <i>Approx variable on local skills. Multiple tents can be installed simultaneously.</i>	Assisted online / on-site, depending on what your project requires

120 days

10% deposit

Drawings can only begin after the deposit has been paid

40% progress claim

Manufacturing drawings can only begin after the progress claim has been paid

40% progress claim

Shipment can only begin after the progress claim has been paid

Final 10%

The final 10% is to be paid on arrival to your nearest port

WANT TO KNOW MORE?

ecostructures.com.au

  @EcoStructures

24 Marine Terrace, Fremantle,
Western Australia, 6160

+61 8 9193 8007

GO BEYOND



A company of The WABi Group

W A B I W A B I W A B I W A B I
SIMPLER. SMARTER. STRONGER DESIGN CONSTRUCTIONS WINDOWS

© 2023 Eco Structures